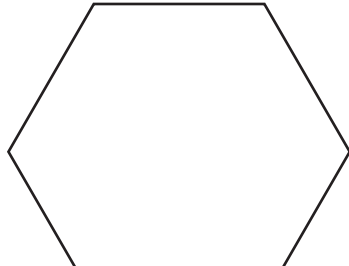
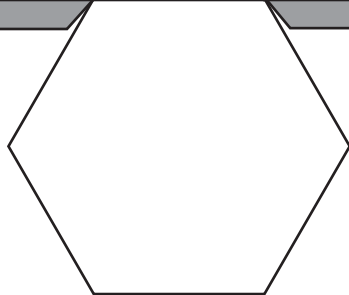
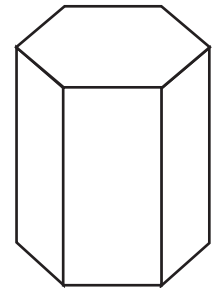
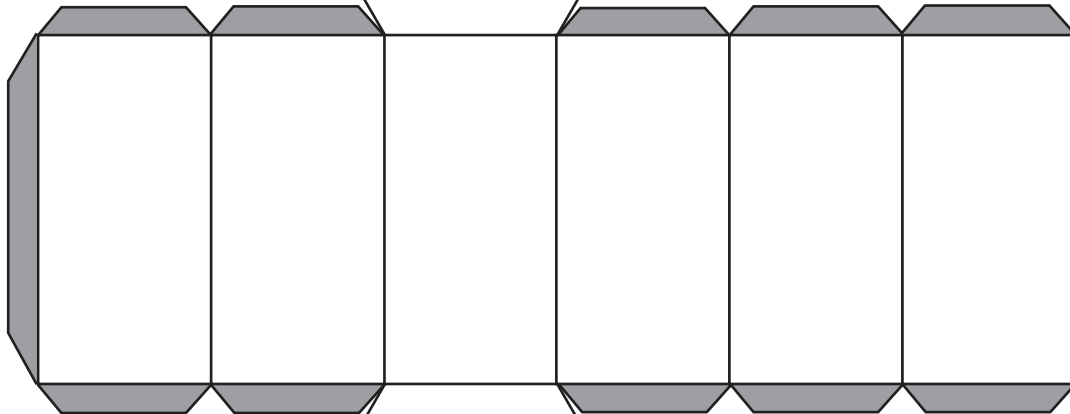


Crystal Shapes

Different minerals have different crystal structures. Here are two examples of simple crystal shapes for you to make yourself. To build your crystals, first colour them in and cut around the outer edges. Fold along the lines so that they look like the pictures, then glue the grey tabs into place.



Hexagonal crystal.
Beryl forms hexagonal crystals.
Beryl is **blue-green**.



Isometric crystal.
In this type of crystal all of the sides are equal.
Pyrite or Fool's gold forms isometric crystals.
Fools gold appears **gold** in colour.

